



NEWS SHEET OCTOBER 2020

As we enter another phase of yet more new regulations to follow, we would like to thank everyone for their continued support during these difficult times. Our Zoom services continue to be a success, and we are grateful to those who work hard in preparing and delivering services, and especially to Kim who made all of this possible and helps to provide a seamless Zoom experience! The weather has changed, the leaves are falling from the trees and the nights are beginning to draw in; but with this somewhat gloomier picture we also have the delight of beautiful Autumnal sunsets, brisk walks with a colourful backdrop of the changing leaves, and the excitement of Christmas on the horizon. We remain mindful of those people affected by coronavirus, whether directly or indirectly, and we continue to pray for those within our church community who cannot spend time with loved ones, or who cannot spend their time doing the things they enjoy, and those who are suffering from illnesses other than coronavirus but whose lives are deeply affected by the restrictions.

Thank you to all those who stayed after service on Sunday 11th October to attend our AGM and Church Meeting – it is always good to reflect on what we have achieved together over the past year and to look ahead to the next one. We are aware that within our church there are a number of us who have a vision for our church in the future, the Elders have discussed this and the possibilities that lie ahead, and are taking some time out with God to reflect and consider what it is we want to achieve together and how we can achieve it. If anyone would like to share any thoughts on their own vision and ideas, please do share them with any of the Elders who can take it to the next meeting to be discussed. One of the main things we have discussed is communication and how we connect with people within the immediate church family, our extended church family, and who we want to connect with outside of the church. Again, if anyone has any thoughts they would like to share, please let us know. We will be arranging a meeting around communication in the coming weeks to discuss how we move forward. Another consideration has been if/when we can open the church building – thank you to Julie for working on the risk assessment around this, it has provided much food for thought and a starting point. We will continue to keep everyone updated on our plans and timescales for opening the doors in line with Synod and government advice. Following on the second sheet below you will find a personal risk assessment and short reflection from Jenny, which allows us as individuals to answer questions to assess our own personal risk on entering the church building. Of course this is ultimately a personal choice however the questionnaire may evoke some thoughts that hadn't occurred to us previously – if you would like any further information on this please get in touch with Jenny or one of the Elders.

Lastly, I would like to take this opportunity to share with you a great idea from our eldership. We know many of you enjoy giving and receiving Christmas cards at church in the lead up to Christmas and while we will not be able to do this this year, we have decided to share messages or electronic cards with one another in the November and December editions of the newsletter. If you have any messages you would like to share, please send them in an email, or via text, or via telephone and I will gladly add them to the next newsletter on your behalf. Alternatively, if you would like to share an electronic Christmas card but cannot find one online, let us know and we'll be glad to help. We are very much looking forward to continuing to share joy and happiness within the church in the lead up to Christmas.

Katie Holt.

'EMERGING INTO A NEW NORMAL' – A PERSONAL RISK

I know the elders and I have had a lot of conversations about going back into church buildings. No doubt you also have been talking with different people about worshipping in a church building again.

Perhaps you know people who have been back to church in a building or you have read news articles about other peoples' experiences? Perhaps you have even heard of an outbreak starting somewhere in the world at a church building?

You might have questions about what worship would be like in the building.

Can we sing? Do we wear a mask? How to do mark off pews and chairs to socially distance? How will we comply with NHS Test and Trace? Lots of questions need considering.

You will be happy to hear that your elderships have been working through a Covid related risk assessment for the church building, with the aim of reducing the risks as much as possible.

However, it is important for you to know that it is impossible to make any environment completely risk free. If and when church buildings open, it is not because they are 'Covid free zones.' Far from it.

Anywhere people gather, any surface someone can touch, any air someone has spoken into could potentially contain covid.

For that reason, we are encouraging you to consider your own personal risks. Below is the quiz that appears on pages 25, 26 and 27 of the URC document "Emerging into the New Normal."

I want to stress that this is a guide to help you think through your own personal risks at this time. It is not exhaustive by any means.

To take the quiz, you might find a piece of paper and pencil helpful or an electronic notepad. As you go along, you will give yourself a score for each question. Make a note of that number per question. You will need to total all those numbers up at the end.

Have a go at the quiz

Advice from the URC. "The assessment 'tool' below helps you to see how different risk factors may combine to give serious health complications should you catch the COVID-19 virus. It does not include the factors that may make you clinically extremely vulnerable, where you should be following the guidance at this time for those who are 'shielding'. It includes the factors where there is significant statistical evidence but does not include any rarer conditions which you may have, so this only offers a starting point. You may want to discuss the results with your doctor or with those who have expectations about your involvement with church life.

This should be read alongside the URC's "Emerging into the 'New Normal'" which includes guidance about minimising risks in the church context, and other government or local advice about staying safe. We are not claiming medical expertise in sharing this way of scoring your risk but giving a way to show how serious catching the virus may be for you."

(Please find the questionnaire on the next page)

Circle the score next to each one that applies to you and add up your score.

Risk Factor		Score
Age	50-59	1
	60-69	2
	70-79	4
	80 and over	6
Sex at birth	Male	1
Ethnicity	Caucasian	0
	Black African Descent	2
	Indian Asian Descent	1
	Filipino Descent	1
	Other (including mixed race)	1
Diabetes & Obesity	Type 1 & 2	1
	Diabetes Type 1 & 2 with presence of microvascular complications or HbA1c \geq 64mmol/mol	2
	Body Mass Index greater than or equal to 35 kg/m ² online BMI calculator: www.nhs.uk/live-well/healthy-weight/bmi-calculator	1
Cardiovascular disease	Angina, previous heart attack, stroke or cardiac intervention	1
	Heart Failure	2
Pulmonary (lung) disease	Asthma	1
	Non-asthma chronic pulmonary disease	2
	Either of the above requiring oral corticosteroids in the last year	1
Malignant neoplasm (cancer)	Active malignancy	3
	Malignancy in remission	1
Rheumatological conditions	Active treated conditions	2

Immuno-suppressant therapies	Any indication	2
Total Score		

A **score of under 3 indicates a lower risk**, but you should still be following the guidance for staying safe.

A **score of 3-5 suggests a greater risk** and you should consider ways of reducing your risk by taking additional precautions or avoiding some activities.

A **score of 6 or more suggests a high risk** and indicates that you should continue to work or participate in church life from your home.

The scoring is based on an [article](#) from the [British Medical Association](#) website.

So – how did you do?

The first time I looked at this, my heart sank. Although my personal score is quite low, I know that many of you will find yourself in the higher bracket.

I want to assure you that your elders are considering ways to support everyone whether worshipping at home or one day in a church building.

To close, I want to encourage you by reminding you of John chapter 4 and a conversation Jesus had with a Samaritan woman about places of worship.

The woman said to Jesus, “Sir, I can see that you are a prophet. My Samaritan ancestors worshiped on this mountain, but Jews like you claim that the place where we must worship is in Jerusalem.”

Jesus replies, “Woman, believe me, a time is coming when you will worship the Father neither on this mountain nor in Jerusalem.”

Jesus does not talk about place when he talks about worship.

ZOOM SERVICE DETAILS

We will continue to use our new Zoom details to connect on a Sunday morning. All services will commence at 11am each Sunday, unless otherwise stated. Please note, going forward the meeting host can mute all participants however the host can no longer unmute meeting attendees. If you are joining Zoom via the computer, you can select to unmute yourself in the bottom left corner of the screen; and if you are joining over the phone you can press *6 to mute and unmute. Anyone wishing to join our weekly virtual worship can request the zoom details by emailing us elmwoodavenueurc@gmail.com.

UPCOMING PREACHING DETAILS

Date	Theme for Worship	Provisionally - To Be Led By	Introduction to the Theme
18th October	"Imitators and Influencers"	Felicity Peers	Paul and his companions gratefully greet those who responded joyfully to their gospel message. The Holy Spirit empowered the proclaiming and receiving of the word, and the faith, hope and love at work in the community are already inspiring others who hear of them.
25th October	"So deeply do we care" & Christmas Appeal	Katie Holt, with the help of Lorna Griffiths	Christmas Appeal alongside our theme for this week: Paul recalls the confidence in God required to preach in the challenging circumstances facing them in Thessalonica. They focused not on their own needs but on God's good news, and their authority as apostles was expressed not in self-promoting demands but in self-giving tender care. The clocks will go back this Sunday – please be sure to change yours so you don't miss the service
1st November	All Saints Day & Christmas Appeal	Julie Holt	Our service this week will be around All Saints Day and continuing the theme from the previous week around our Christmas Appeal.
8th November	"FAQ's" Remembrance Sunday & Holy Communion	Lorna Griffiths	The service will commence with 2 minutes silence, our act of remembrance before we continue with our worship. The scripture letter responds to the community's concern that some have died before the Lord's return. But those who believe that Jesus died and rose again have nothing to fear. Both those who have died and those who are alive will be with him for ever. This week we will also be celebrating Holy Communion. All are welcome. If you wish to take this, please have a small cube of bread and a small glass of juice/wine ready.
15th November	"Coming, ready or not"	Felicity Peers	'Peace and security' in this dark world can be hard to find. But those who anticipate the day of the Lord, and already live in the light of the risen Christ, have faith, hope, and love as a strong defence against all that seeks to destroy them.

ELMWOOD CHURCH FAMILY NEWS

LOCAL CHARITY CHRISTMAS APPEALS

Over the next two Sundays (25th October and 2nd November) we will be sharing details on some local charity Christmas appeals we will be supporting as a church this year. Listed below are the charities we will be supporting and their website addresses, if you would like to take a look ahead of the service.

St Joseph's Family Centre

<https://www.saintjosephsfamilycentre.co.uk/>

Homestart Warrington

<https://homestart-warrington.org.uk/>

St Rocco's Hospice

<https://www.stroccos.org.uk/>

THANK YOU!

We would like to say a heartfelt thank you to everyone for continuing to send their offertory despite the building being closed. Whilst we continue to come together via Zoom, we are still required to pay bills and our annual maintenance of the ministry therefore all kind donations are gratefully received. Although our church is small, we are often overwhelmed by the generosity of people who give their money, but also their time and skills that keep our church spirit alive and help to continue our mission as a church.

LET'S CELEBRATE!

CONGRATULATIONS to John and Eleni Williams who have recently celebrated their 25th Wedding Anniversary



HAPPY 92nd BIRTHDAY to Ron – an amazing milestone!



Wishing **Julie Holt** a long and happy retirement from the end of October



PERSONAL PRAYER & PASTORAL SUPPORT

Although our church remains closed, Rev Jenny Travis and our Elders will continue to provide support if you need it. Please find contact details below:

Rev Jenny Travis Our Minister	Church Email Address to Contact all Elders
Email: Jennytravis37@gmail.com	Email: elmwoodavenueurc@gmail.com
Telephone: 01925 211141	

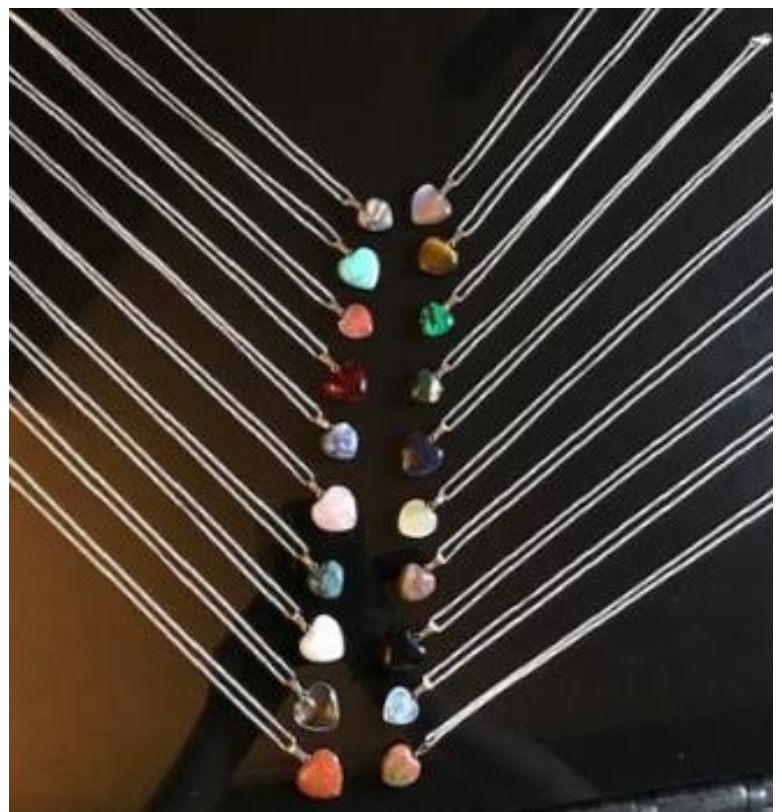
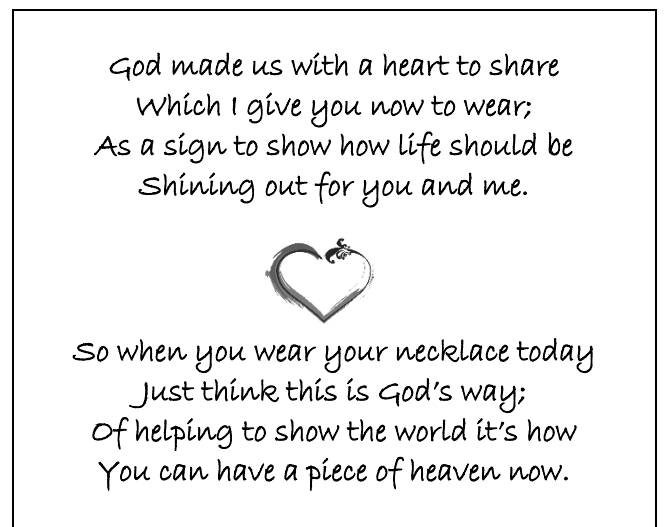
ELMWOOD CHURCH FAMILY NEWS CONTINUED...

Our talented Church Secretary Lorna Griffiths has been very busy over the past few months and created a selection of beautiful heart pendant necklaces that we are very excited to share with you. Please see below images – the necklaces are available to buy at a price of £5 and all proceeds will go directly to the church. They come packaged in a clear bag with a small card displaying a poem and church details. The perfect gift for Christmas!

These are beautifully handmade costume jewellery polished stone heart pendant necklaces, which are available in various colours. They are made with an 18-inch (46.5cm) silver-coloured chain with a lobster clasp. You may wish to request a specific colour however these are dependent upon availability.

The necklace comes packaged in a presentation card, which contains a unique poem on the back. An envelope is available should you wish to request this. The card is blank inside so you are able to write your own personalised message.

The poem on the back is described below, however a Christmas poem is also available on request:



JOINT PASTORATE

Elmwood Ave URC



Elmwood Avenue UR Church



www.elmwoodavenueurc.co.uk

Thomas Risley URC



Thomas Risley Church



thomasrisley.org

Lymm URC



Lymm United Reformed Church



lymmurc.org.uk

St John's URC



St John's United Reformed Church



stjohnsurc.co.uk

UPCOMING EVENTS FROM SYNOD

Please see below key events taking place as part of the Northern Synod Festival of Tents. All the events are via Zoom and can be booked through urc.of.festival.of.tents@gmail.com and of course everything is absolutely FREE!

Monday 19th October at 7.30 p.m - we are delighted to have Andrew Roberts, author of *Holy Habits* join us, so please share widely, so as many people as possible, can pull up a chair to hear Andrew.

Tuesday 20th October – 7.30 pm - Stuck for ideas about Christmas with restrictions? Why not join Hannah Middleton and John Stephenson for some inspiration and find out about resources to encourage families to bring the real meaning of Christmas to home

Saturday 24th October 7.30 p.m. – The popular Gareth Davies-Jones – is in concert on Saturday evening, so connect and enjoy!

Monday 26th October 7.30 pm - Exploring Life Joy and learning how to cherish, this will be a real treat for these times - Meet Dr Rebecca Dinsdale (a URC member and author of *Life Joy*) as she talks about how we nurture our own Life Joy

Tuesday 22nd October at 7.30 p.m. Being the family of God together. Dr Sam Richards, Head of Children and Youth Work at Church House will be with us as we share how people of all generations build the family of God with Intergenerational Mission and Ministry

Wednesday 28th October 7.30 p.m. Revd Alex Clare-Young is presenting ideas about Church in the Digital Space...so very relevant to all of us, Alex will be encouraging us to explore more!